

# MONTHLY MEMBERSHIP PROGRESS REPORT

LOCATION INDIA

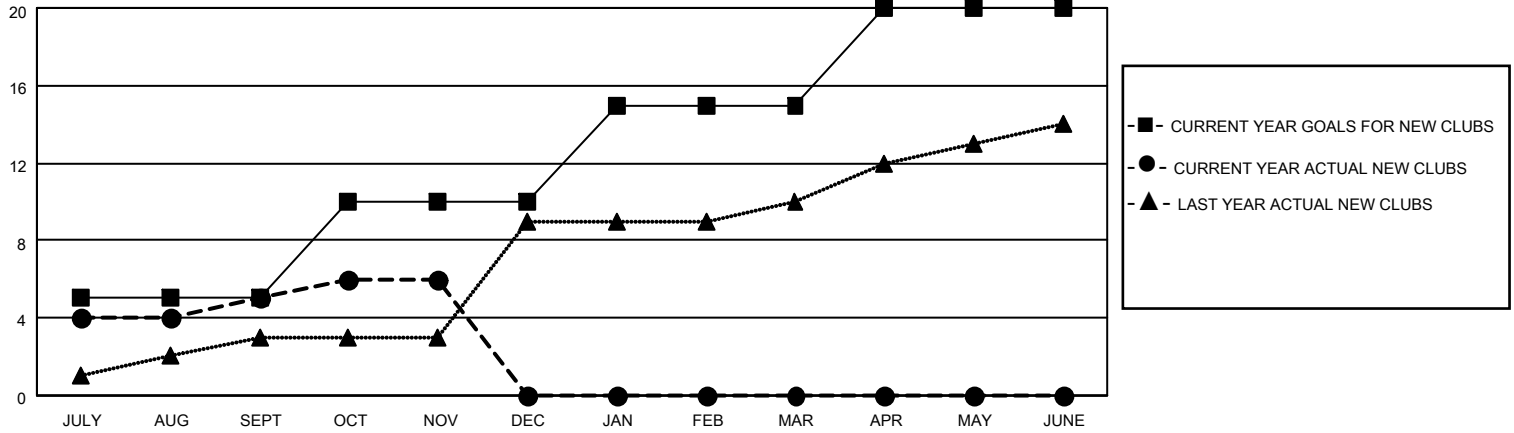
District 318 A

Results as of: 11/30/2021

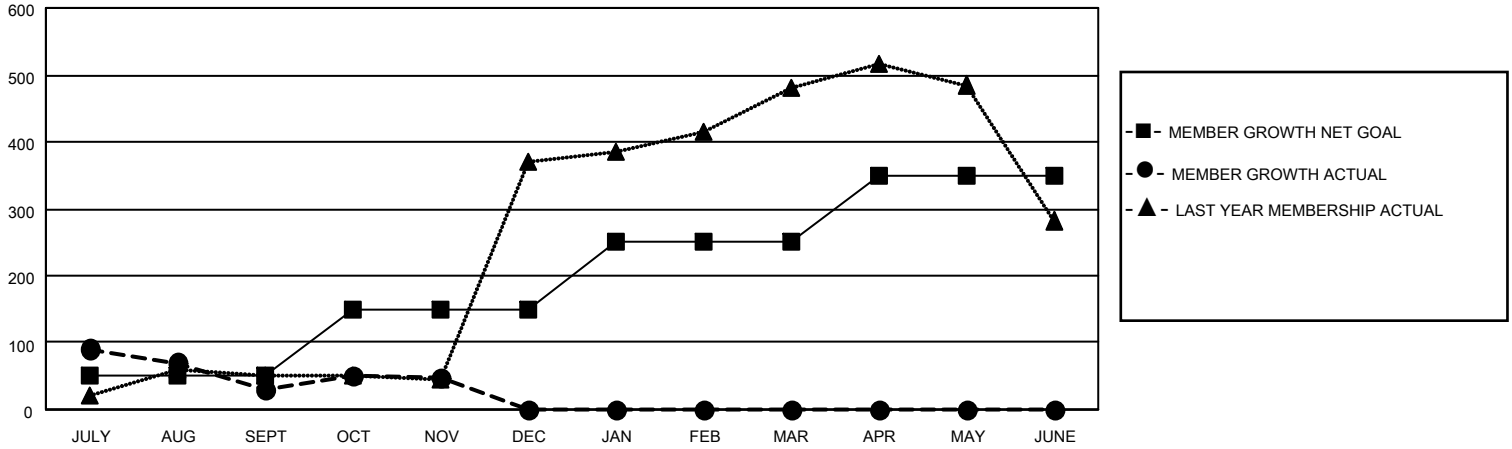
Clubs			
RESULTS FOR 2021-2022			
QUARTER	NEW CLUB GOAL	NEW CLUBS	DROPPED CLUBS
JULY/AUG/SEPT	5	5	3
OCT/NOV/DEC	5	1	1
JAN/FEB/MAR	5	0	0
APR/MAY/JUNE	5	0	0

Members			
RESULTS FOR 2021-2022			
QUARTER	MEMBER GROWTH NET GOAL	MEMBER GROWTH ACTUAL	DROPPED MEMBERS ACTUAL (including transfers)
JULY/AUG/SEPT	50	190	150
OCT/NOV/DEC	100	59	39
JAN/FEB/MAR	100	0	0
APR/MAY/JUNE	100	0	0

**GOALS AND ACTUAL NEW CLUBS CUMULATIVE**



**GOALS AND ACTUAL MEMBERS CUMULATIVE**



**DROPPED CLUBS: 4**

**45 CLUBS OF 145 ADDED 1 OR MORE NEW MEMBERS**

**GENDER DISTRIBUTION**

MALE	3,173 (74.27%)
FEMALE	1,099 (25.73%)
NON BINARY	0 (0.00%)
PREFER NOT TO ANSWER	0 (0.00%)

**DROPPED MEMBERS**

[CLICK HERE FOR CUMULATIVE MEMBERSHIP DATA](#)

DECEASED	8
CLUB CANCELLED	50
OTHER	131
<b>TOTAL</b>	<b>189</b>

TOTAL FAMILY UNIT MEMBERS 2,077

FAMILY MEMBERS PAYING HALF DUES 1,127